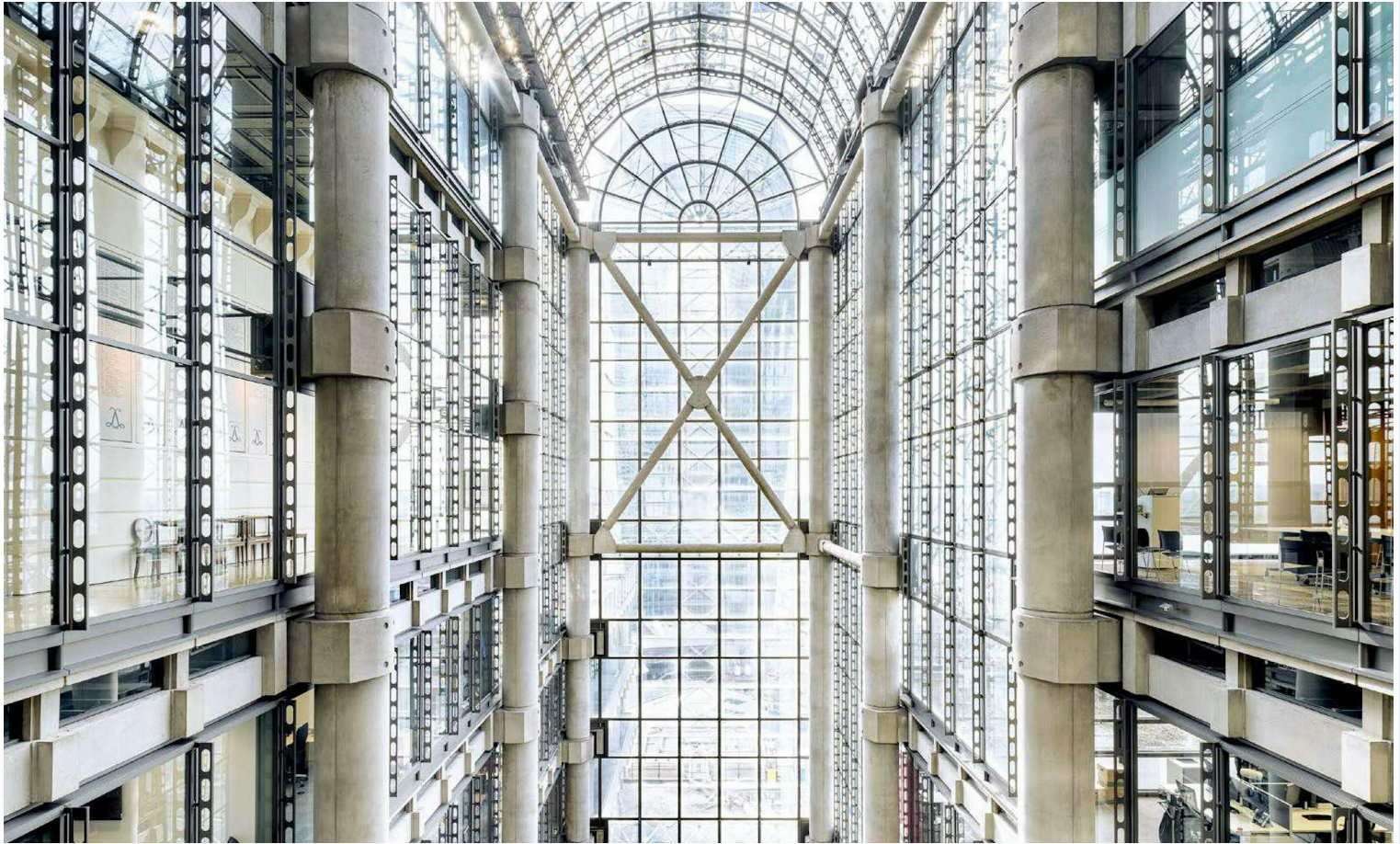


Premium Office Space in Landmark Building

NEWTON
PERKINS



The Lloyd's Building, 1 Lime
Street, London, EC3M 7HA
5,000 TO 26,376 SQ FT

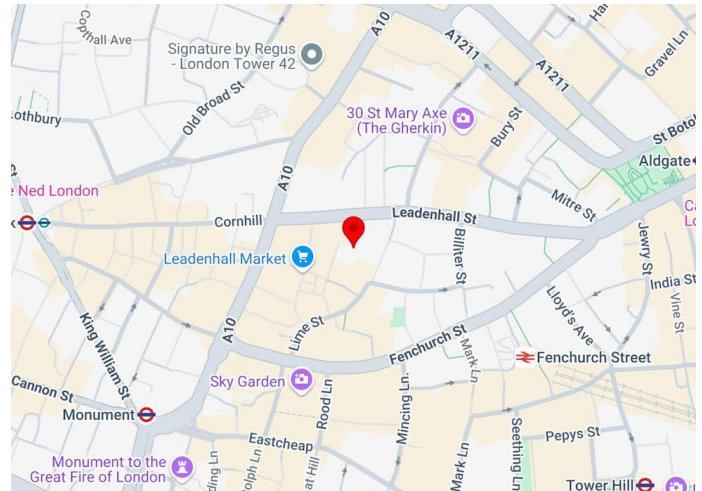
TO LET

- One of London's iconic buildings
- Cafe and food amenity
- Unique meeting room facilities
- Wellbeing centre
- Exposed concrete ceiling system
- LED integrated lighting
- 3m floor to ceiling height
- End of trip facilities

+44 (0) 20 7456 0700
newtonperkins.com

Premium Office Space in Landmark Building

NEWTON
PERKINS



Summary

Available Size	5,000 to 26,376 sq ft / 464.52 to 2,450.41 sq m
Rent	£67.50 per sq ft
Rates Payable	£23 per sq ft
Service Charge	£16.84 per sq ft
EPC	Upon enquiry

Description

There are few buildings in the world as recognisable as the timeless Lloyd's Building. Richard Rogers and Partners 'inside out' building is an icon of innovative design and engineering.

Location

The Lloyd's Building is located in the heart of London's 'square mile' insurance district. With Bank, Fenchurch Street and Liverpool Street station all within a 5-minute walk from the building, this offers great links for commuting in and out of London

Accommodation

The accommodation comprises the following areas:

Floor/Unit	sq ft	sq m
10th	5,355	497.50
9th	21,021	1,952.91
Total	26,376	2,450.41

*The 9th floor can be split from c. 5,000 sq ft.



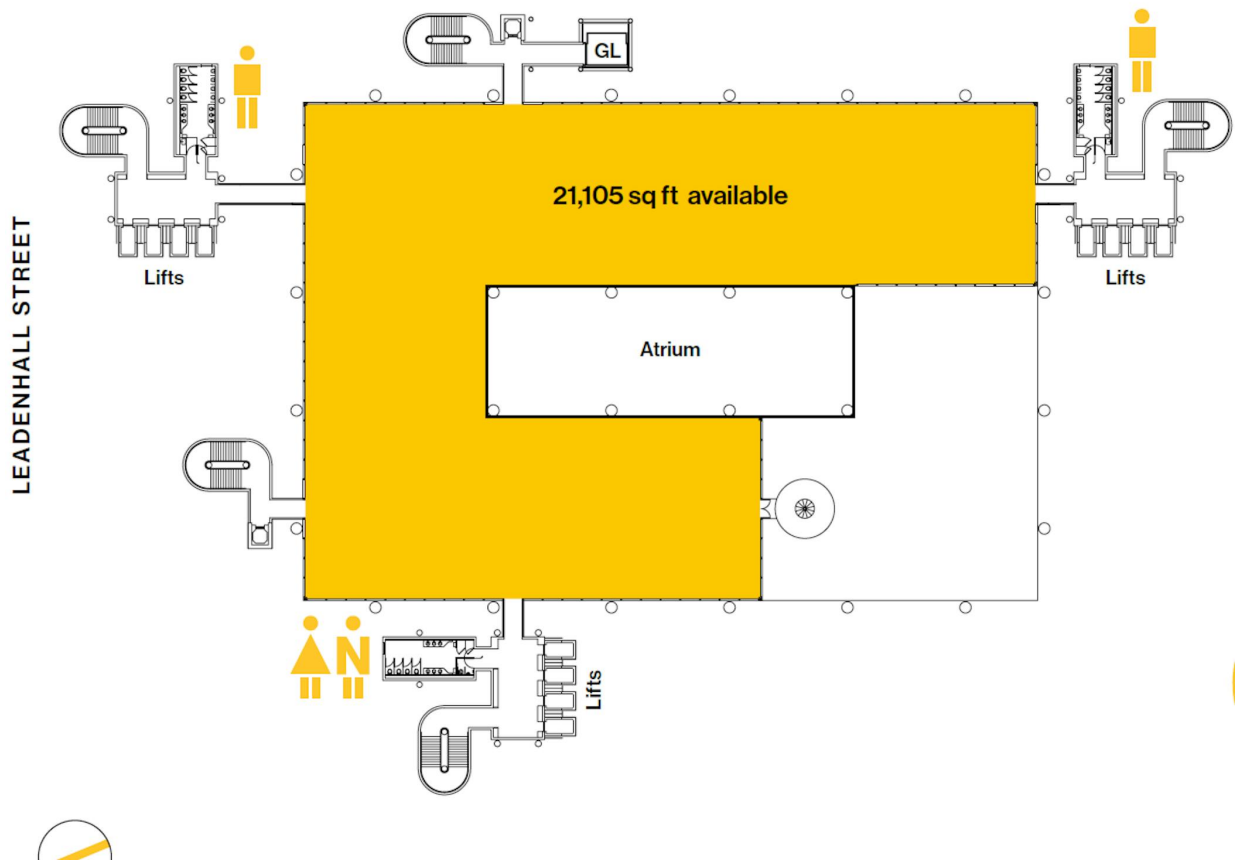
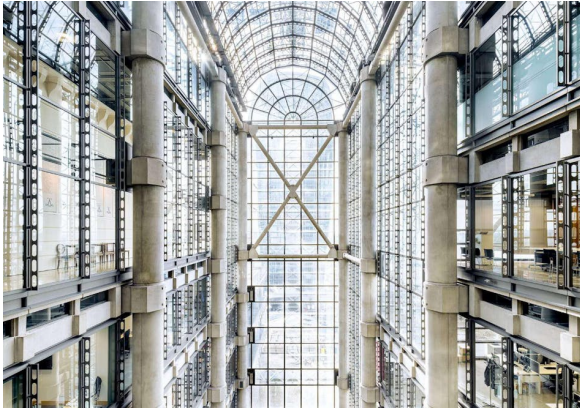
Jonathan Beilin
0207 456 0727 | 0797 639 2016
jb@newtonperkins.com



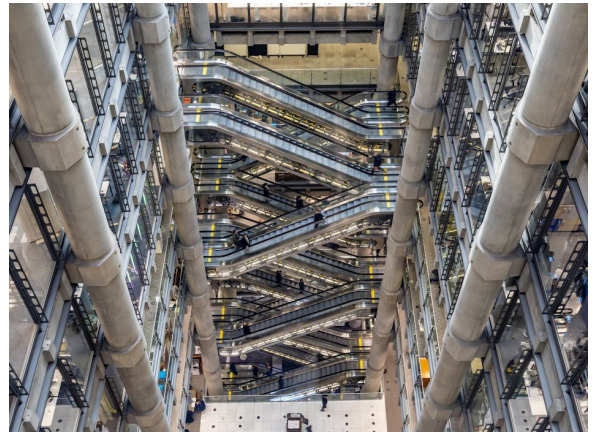
Nick Russell-Smith
020 7456 0707
nrs@newtonperkins.com



Leo Gough
0207 456 1728 | 07546 695 724
lg@newtonperkins.com



+44 (0) 20 7456 0700
newtonperkins.com



+44 (0) 20 7456 0700
newtonperkins.com