

Grade A Offices with Double Height Reception 66 Prescott Street, London E1



Transport Links

- 0.23 miles from Aldgate East
- 0.26 miles from Aldgate
- 0.31 miles from Tower Hill
- 0.50 miles from Fenchurch Street

Lease

A new lease(s) is available direct from the landlord, outside the security of tenure and compensation provisions of the Landlord & Tenant Act 1954, Part II (as amended).

Rent

£46.50 per sq.ft

Accommodation

Ground Floor	c.6,000 – 11,279 sq ft	557 – 1,048m ²
--------------	------------------------	---------------------------

*Potential to create a Private Entrance

Rates Payable (2021/22)

Estimated at £17.33 per sq.ft

However, all interested parties should make their own enquiries.

Service Charge

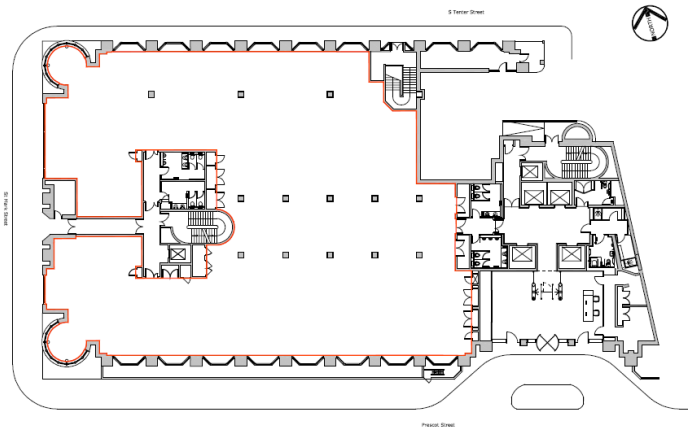
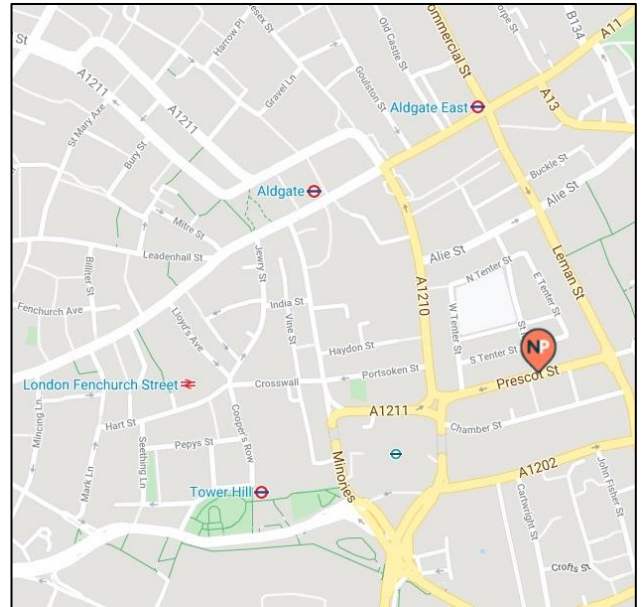
Estimated at £8.50 per sq.ft

VAT

The building has been elected for VAT.

Amenities

- Air Conditioning
- Fully Accessible Raised Floors
- Suspended Ceiling with new LED Lighting
- Double Height Reception
- Ability to create self-contained access (subject to PP)
- Bike Racks & Shower Facilities
- EPC – D9I



Newton Perkins

Jonathan Beilin – 07967 392 016
E-mail: jb@newtonperkins.com

Newton Perkins LLP, Peek House, 20 Eastcheap, London EC3M 1NP

Newton Perkins for themselves and for the vendors or lessors of this property whose agents they are given notice that:- (1) The particulars are set out as a general outline for the guidance of the intending purchasers and do not constitute part of an offer or contract; (2) All descriptions, dimensions, references to condition and necessary permissions for use and occupation and other details are given without responsibility and any intending purchasers should not rely on them as standards or representations of fact but must satisfy themselves by inspection or otherwise as to the correctness of each of them; (3) No persons in the employment of Newton Perkins has any authority to make or give any representation or warranty whatsoever in relation to this property