

PRESCOT STREET

c. 6,000 - 11,279 SQ FT OFFICE TO LET

ALDGATE E1



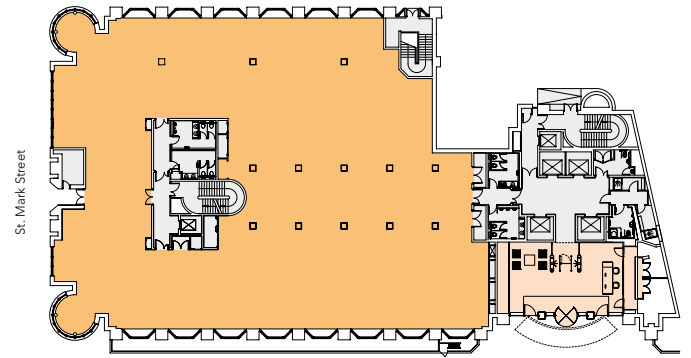


AMENITIES

- // Opportunity to create self contained access
- // Suspended ceilings with new LED lighting
- // Double-height reception
- // Floor to ceiling height 2.70m
- // 4 pipe fan coil air conditioning
- // Cycle storage & shower facilities
- // 250mm raised access floors
- // 24 hour access and security

GROUND FLOOR PLAN

c.6,000 - 11,279 sq ft (557 - 1,048 sq m)



Prescot Street

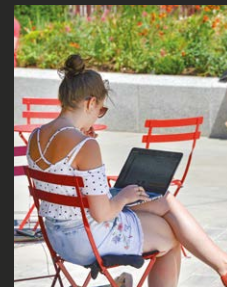
For indicative purposes only, not to scale.



LOCATION

The building is on the corner of Prescot Street and St Mark Street. The street has undergone a transformation in the last 5 years with a range of new hotels, high class residential and office developments.

The building benefits from good transport links with Aldgate and Aldgate East Underground Stations circa 300m to the north and Tower Hill 300m to the south west.



RENT

£52.50 per sq ft per annum.

RATES

£16.94 per sq ft per annum (2018/19).

SERVICE CHARGE

£8.50 per sq ft.

JONATHAN BEILIN

020 7456 0727
jb@newtonperkins.com

JACK WELLS

020 7456 0729
jw@newtonperkins.com

