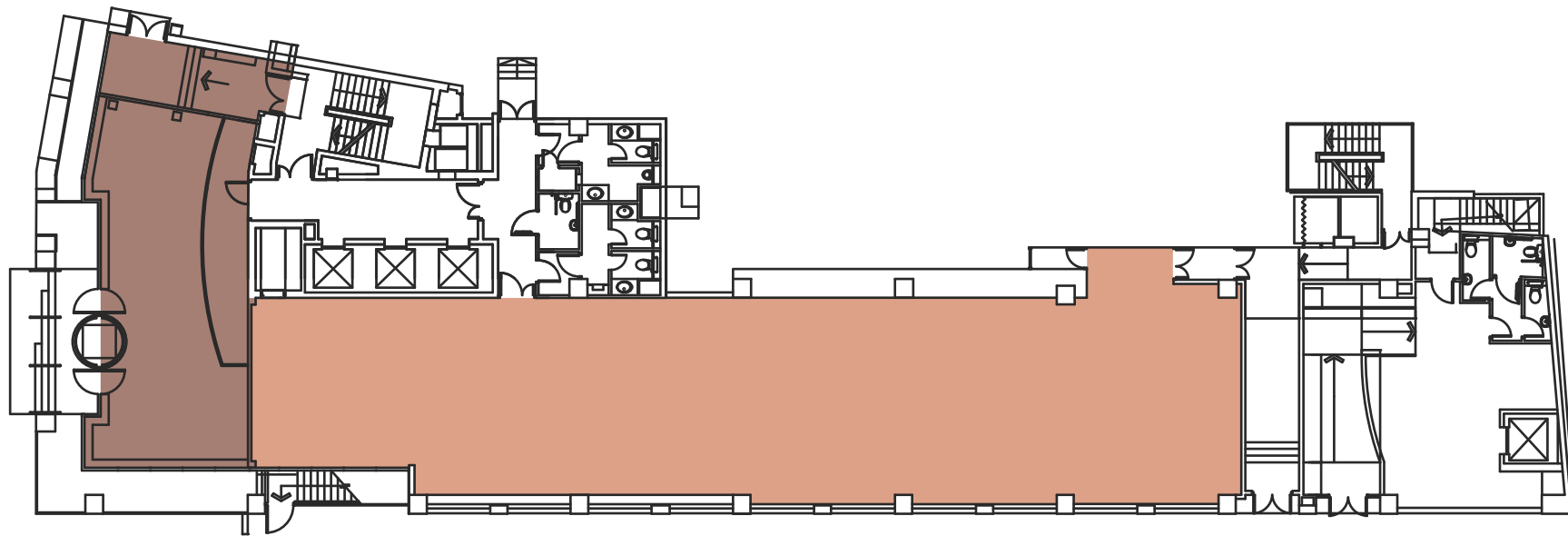


## GROUND FLOOR PLAN

2,918 Sq Ft to Let (271.1 Sq M)



⌚ Plan not to scale,  
for indicative purposes only.

■ Office ■ Reception ■ Core

## PART 3RD FLOOR PLAN

c.3,000 Sq Ft to Let (c.279.0 Sq M)




Plan not to scale,  
for indicative purposes only.




■ Office ■ Reception ■ Core

## 5TH FLOOR PLAN

8,428 Sq Ft to Let (783.0 Sq M)

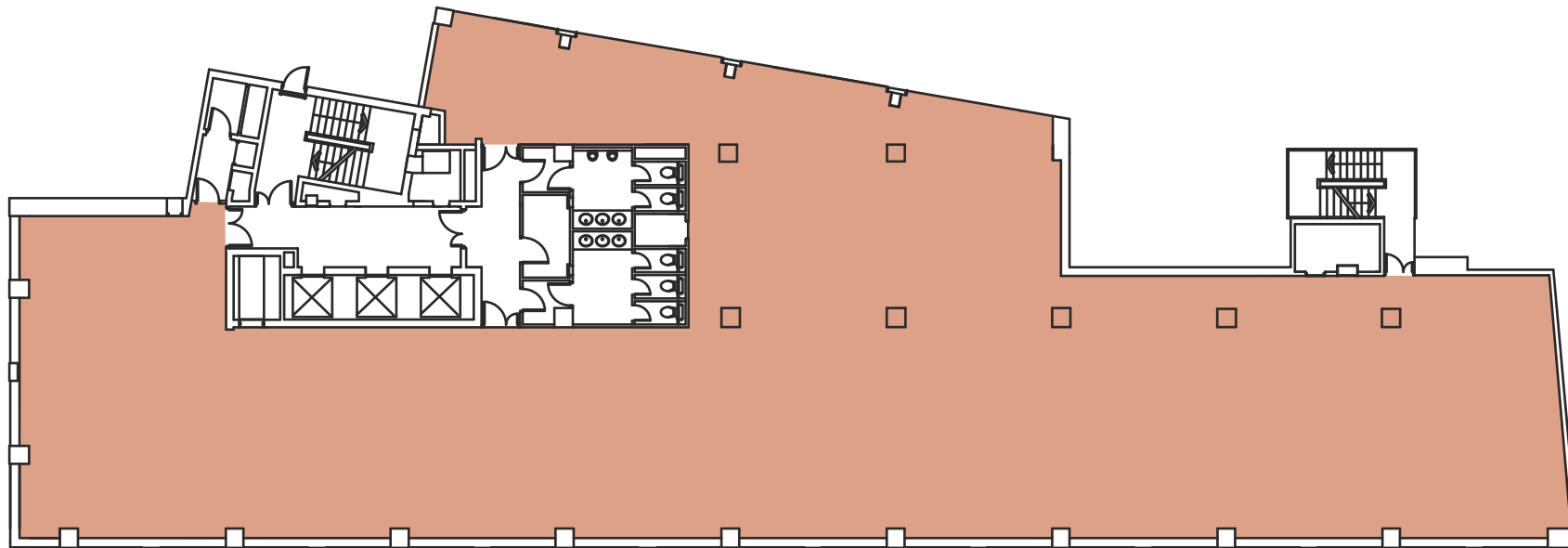



 Plan not to scale,  
for indicative purposes only.



 Office  Reception  Core

## 7TH FLOOR PLAN

6,831 Sq Ft to Let (634.6 Sq M)



 Plan not to scale,  
for indicative purposes only.

 Office  Reception  Core